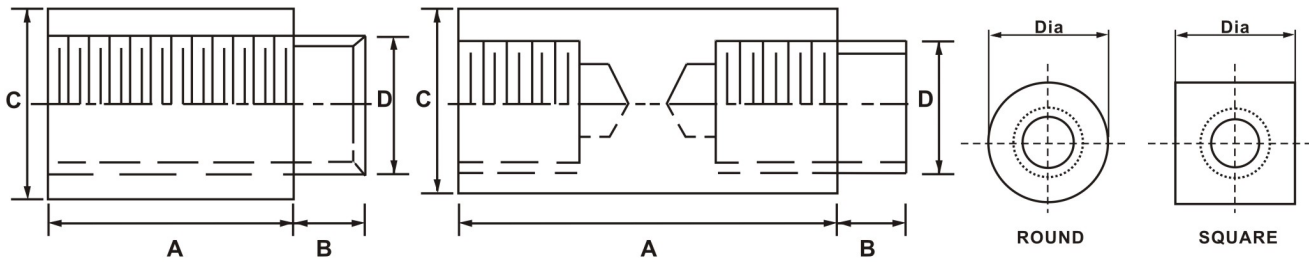


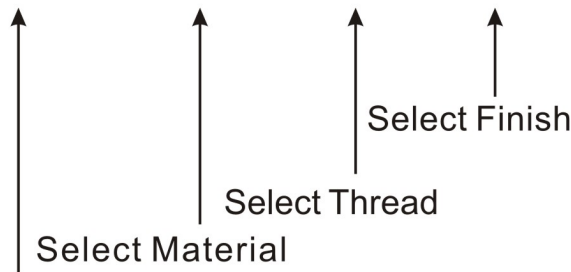
Foreword

(AMERICAN STANDARD SWAGE STANDOFFS)



How to order American Standard Swage Standoffs

ASW- 51608-MS1- 632- S10



Tolerances:

Diameter: Standard commercial bar stock tolerances.
 Length: 0 UP to 4" ± .005
 From 4" to 6" ± .008
 Over 6" ± .010

Threads:

External - Standard Unified Class 2A
 Internal - Standard Unified Class 2B

Select Part No. corresponding to the diameter and length necessary for Your application

Material Description	Code	
	Round	Square
Carbon Steel	MS1	MS2
300 Series Stainless Steel	MSS1	MSS2
Aluminum	MA1	MA2
Brass	MB1	MB2
Nylon	MN1	MN2

Finish Description	Code
Nickel Plate	S1
Chrome Plate	S2
Satin Chrome	S6
Zinc Plate	S10
Zinc Yellow Chromate	S11
No Finish	S14
Black Oxide	S22
Black Zinc	S23
Passivate	SB5
Anodize Clear	SA1
Glossy Anodize Clear	SA2
Anodize Black	SA3
Glossy Anodize Black	SA4
Clear Iridite	SA5

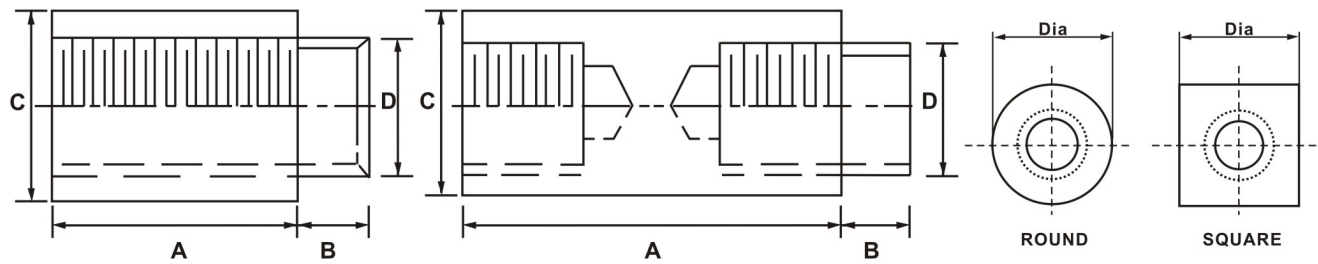
Code	Thread
080	0-80
256	2-56
348	3-48
440	4-40
632	6-32
832	8-32
1032	10-32

Code	Shank Length	Board Thickness
A	0.075	0.031
B	0.105	0.063
C	0.135	0.094
D	0.165	0.125
E	0.230	0.188
F	0.290	0.250

Custom modified products are available.

SWAGE STANDOFFS

America Standard



1/8" Diameter Swage Standoffs

Part No.	Length	Part No.	Length	Part No.	Length
ASW-1801	3/32	ASW-1811	13/32	ASW-1821	23/32
ASW-1802	1/8	ASW-1812	7/16	ASW-1822	3/4
ASW-1803	5/32	ASW-1813	15/32	ASW-1823	25/32
ASW-1804	3/16	ASW-1814	1/2	ASW-1824	13/16
ASW-1805	7/32	ASW-1815	17/32	ASW-1825	27/32
ASW-1806	1/4	ASW-1816	9/16	ASW-1826	7/8
ASW-1807	9/32	ASW-1817	19/32	ASW-1827	29/32
ASW-1808	5/16	ASW-1818	5/8	ASW-1828	15/16
ASW-1809	11/32	ASW-1819	21/32	ASW-1829	31/32
ASW-1810	3/8	ASW-1820	11/16	ASW-1830	1

5/32" Diameter Swage Standoffs

Part No.	Length	Part No.	Length	Part No.	Length
ASW-53201	3/32	ASW-53211	13/32	ASW-53221	23/32
ASW-53202	1/8	ASW-53212	7/16	ASW-53222	3/4
ASW-53203	5/32	ASW-53213	15/32	ASW-53223	25/32
ASW-53204	3/16	ASW-53214	1/2	ASW-53224	13/16
ASW-53205	7/32	ASW-53215	17/32	ASW-53225	27/32
ASW-53206	1/4	ASW-53216	9/16	ASW-53226	7/8
ASW-53207	9/32	ASW-53217	19/32	ASW-53227	29/32
ASW-53208	5/16	ASW-53218	5/8	ASW-53228	15/16
ASW-53209	11/32	ASW-53219	21/32	ASW-53229	31/32
ASW-53210	3/8	ASW-53220	11/16	ASW-53230	1

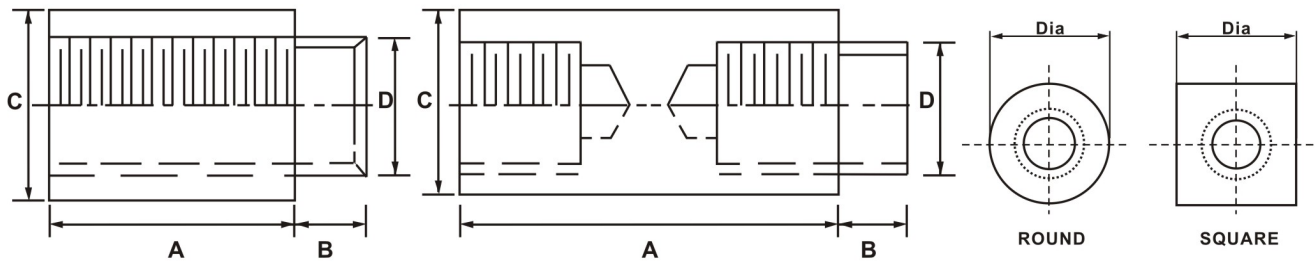
3/16" Diameter Swage Standoffs

Part No.	Length	Part No.	Length	Part No.	Length
ASW-31601	3/32	ASW-31611	13/32	ASW-31621	23/32
ASW-31602	1/8	ASW-31612	7/16	ASW-31622	3/4
ASW-31603	5/32	ASW-31613	15/32	ASW-31623	25/32
ASW-31604	3/16	ASW-31614	1/2	ASW-31624	13/16
ASW-31605	7/32	ASW-31615	17/32	ASW-31625	27/32
ASW-31606	1/4	ASW-31616	9/16	ASW-31626	7/8
ASW-31607	9/32	ASW-31617	19/32	ASW-31627	29/32
ASW-31608	5/16	ASW-31618	5/8	ASW-31628	15/16
ASW-31609	11/32	ASW-31619	21/32	ASW-31629	31/32
ASW-31610	3/8	ASW-31620	11/16	ASW-31630	1

Custom modified products are available.

SWAGE STANDOFFS

America Standard



1/4" Diameter Swage Standoffs

Part No.	Length	Part No.	Length	Part No.	Length
ASW-1401	3/32	ASW-1417	19/32	ASW-1433	1-3/16
ASW-1402	1/8	ASW-1418	5/8	ASW-1434	1-1/4
ASW-1403	5/32	ASW-1419	21/32	ASW-1435	1-5/16
ASW-1404	3/16	ASW-1420	11/16	ASW-1436	1-3/8
ASW-1405	7/32	ASW-1421	23/32	ASW-1437	1-7/16
ASW-1406	1/4	ASW-1422	3/4	ASW-1438	1-1/2
ASW-1407	9/32	ASW-1423	25/32	ASW-1439	1-9/16
ASW-1408	5/16	ASW-1424	13/16	ASW-1440	1-5/8
ASW-1409	11/32	ASW-1425	27/32	ASW-1441	1-11/16
ASW-1410	3/8	ASW-1426	7/8	ASW-1442	1-3/4
ASW-1411	13/32	ASW-1427	29/32	ASW-1443	1-13/16
ASW-1412	7/16	ASW-1428	15/16	ASW-1444	1-7/8
ASW-1413	15/32	ASW-1429	31/32	ASW-1445	1-15/16
ASW-1414	1/2	ASW-1430	1	ASW-1446	2
ASW-1415	17/32	ASW-1431	1-1/16		
ASW-1416	9/16	ASW-1432	1-1/8		

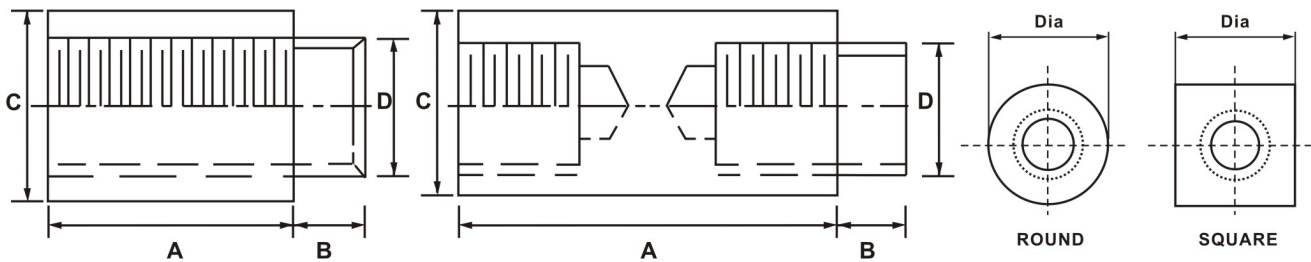
5/16" Diameter Swage Standoffs

Part No.	Length	Part No.	Length	Part No.	Length
ASW-51601	3/32	ASW-51617	19/32	ASW-51633	1-3/16
ASW-51602	1/8	ASW-51618	5/8	ASW-51634	1-1/4
ASW-51603	5/32	ASW-51619	21/32	ASW-51635	1-5/16
ASW-51604	3/16	ASW-51620	11/16	ASW-51636	1-3/8
ASW-51605	7/32	ASW-51621	23/32	ASW-51637	1-7/16
ASW-51606	1/4	ASW-51622	3/4	ASW-51638	1-1/2
ASW-51607	9/32	ASW-51623	25/32	ASW-51639	1-9/16
ASW-51608	5/16	ASW-51624	13/16	ASW-51640	1-5/8
ASW-51609	11/32	ASW-51625	27/32	ASW-51641	1-11/16
ASW-51610	3/8	ASW-51626	7/8	ASW-51642	1-3/4
ASW-51611	13/32	ASW-51627	29/32	ASW-51643	1-13/16
ASW-51612	7/16	ASW-51628	15/16	ASW-51644	1-7/8
ASW-51613	15/32	ASW-51629	31/32	ASW-51645	1-15/16
ASW-51614	1/2	ASW-51630	1	ASW-51646	2
ASW-51615	17/32	ASW-51631	1-1/16		
ASW-51616	9/16	ASW-51632	1-1/8		

3/8" Diameter Swage Standoffs

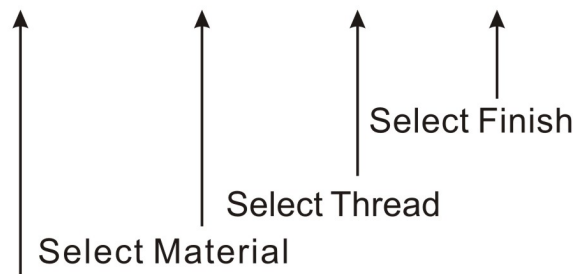
Part No.	Length	Part No.	Length	Part No.	Length
ASW-3801	3/32	ASW-3817	19/32	ASW-3833	1-3/16
ASW-3802	1/8	ASW-3818	5/8	ASW-3834	1-1/4
ASW-3803	5/32	ASW-3819	21/32	ASW-3835	1-5/16
ASW-3804	3/16	ASW-3820	11/16	ASW-3836	1-3/8
ASW-3805	7/32	ASW-3821	23/32	ASW-3837	1-7/16
ASW-3806	1/4	ASW-3822	3/4	ASW-3838	1-1/2
ASW-3807	9/32	ASW-3823	25/32	ASW-3839	1-9/16
ASW-3808	5/16	ASW-3824	13/16	ASW-3840	1-5/8
ASW-3809	11/32	ASW-3825	27/32	ASW-3841	1-11/16
ASW-3810	3/8	ASW-3826	7/8	ASW-3842	1-3/4
ASW-3811	13/32	ASW-3827	29/32	ASW-3843	1-13/16
ASW-3812	7/16	ASW-3828	15/16	ASW-3844	1-7/8
ASW-3813	15/32	ASW-3829	31/32	ASW-3845	1-15/16
ASW-3814	1/2	ASW-3830	1	ASW-3846	2
ASW-3815	17/32	ASW-3831	1-1/16		
ASW-3816	9/16	ASW-3832	1-1/8		

Custom modified products are available.



How to order Metric Standard Swage Standoffs

MSW- 0808-MS1- M3.5- S10



Tolerances:

Diameter: Standard commercial bar stock tolerances.

Length: 0 UP to 100 ± 0.13

From 100 to 150 ± 0.2

Over 150 ± 0.25

Threads:

External - Standard Unified Class 6g

Internal - Standard Unified Class 6h

Select Part No. corresponding to the diameter and length necessary for Your application

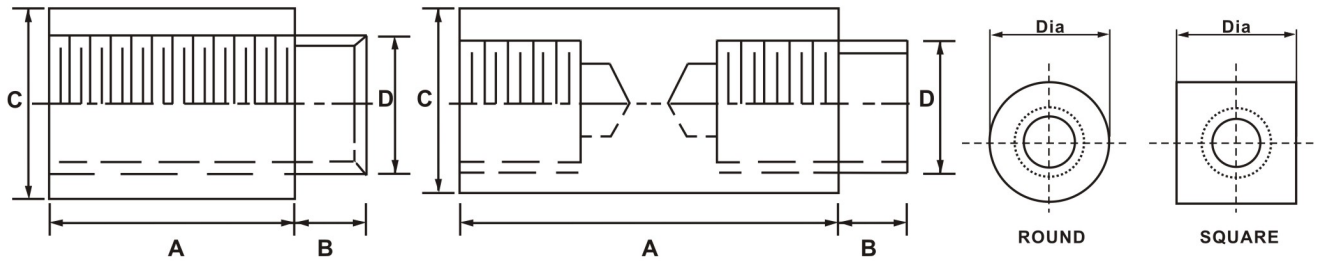
Material Description	Code	
	Round	Square
Carbon Steel	MS1	MS2
300 Series Stainless Steel	MSS1	MSS2
Aluminum	MA1	MA2
Brass	MB1	MB2
Nylon	MN1	MN2

Finish Description	Code
Nickel Plate	S1
Chrome Plate	S2
Satin Chrome	S6
Zinc Plate	S10
Zinc Yellow Chromate	S11
No Finish	S14
Black Oxide	S22
Black Zinc	S23
Passivate	SB5
Anodize Clear	SA1
Glossy Anodize Clear	SA2
Anodize Black	SA3
Glossy Anodize Black	SA4
Clear Iridite	SA5

Code	Thread	Code	Shank Length	Board Thickness
M2.5	M2.5x0.45	A	1.9	0.8
M3	M3x0.5	B	2.7	1.6
M3.5	M3.5x0.6	C	3.4	2.4
M4	M4x0.7	D	4.2	3.2
M5	M5x0.8			

SWAGE STANDOFFS

America Standard



5mm Diameter Swage Standoffs

Part No.	Length	Part No.	Length	Part No.	Length
MSW-0501	3	MSW-0510	12	MSW-0519	21
MSW-0502	4	MSW-0511	13	MSW-0520	22
MSW-0503	5	MSW-0512	14	MSW-0521	23
MSW-0504	6	MSW-0513	15	MSW-0522	24
MSW-0505	7	MSW-0514	16	MSW-0523	25
MSW-0506	8	MSW-0515	17	MSW-0524	26
MSW-0507	9	MSW-0516	18	MSW-0525	27
MSW-0508	10	MSW-0517	19	MSW-0526	28
MSW-0509	11	MSW-0518	20	MSW-0527	29

6mm Diameter Swage Standoffs

Part No.	Length	Part No.	Length	Part No.	Length
MSW-0601	3	MSW-0610	12	MSW-0619	21
MSW-0602	4	MSW-0611	13	MSW-0620	22
MSW-0603	5	MSW-0612	14	MSW-0621	23
MSW-0604	6	MSW-0613	15	MSW-0622	24
MSW-0605	7	MSW-0614	16	MSW-0623	25
MSW-0606	8	MSW-0615	17	MSW-0624	26
MSW-0607	9	MSW-0616	18	MSW-0625	27
MSW-0608	10	MSW-0617	19	MSW-0626	28
MSW-0609	11	MSW-0618	20	MSW-0627	29

8mm Diameter Swage Standoffs

Part No.	Length	Part No.	Length	Part No.	Length
MSW-0801	3	MSW-0810	12	MSW-0819	21
MSW-0802	4	MSW-0811	13	MSW-0820	22
MSW-0803	5	MSW-0812	14	MSW-0821	23
MSW-0804	6	MSW-0813	15	MSW-0822	24
MSW-0805	7	MSW-0814	16	MSW-0823	25
MSW-0806	8	MSW-0815	17	MSW-0824	26
MSW-0807	9	MSW-0816	18	MSW-0825	27
MSW-0808	10	MSW-0817	19	MSW-0826	28
MSW-0809	11	MSW-0818	20	MSW-0827	29

10mm Diameter Swage Standoffs

Part No.	Length	Part No.	Length	Part No.	Length
MSW-1001	3	MSW-1010	12	MSW-1019	21
MSW-1002	4	MSW-1011	13	MSW-1020	22
MSW-1003	5	MSW-1012	14	MSW-1021	23
MSW-1004	6	MSW-1013	15	MSW-1022	24
MSW-1005	7	MSW-1014	16	MSW-1023	25
MSW-1006	8	MSW-1015	17	MSW-1024	26
MSW-1007	9	MSW-1016	18	MSW-1025	27
MSW-1008	10	MSW-1017	19	MSW-1026	28
MSW-1009	11	MSW-1018	20	MSW-1027	29

Custom modified products are available.